



THE WATERFALL CENTER FOR BIOREGIONAL LEARNING

The Panther Creek-shed: A Living Landscape in Transition

Presented by Nate Hudson

Listening Session | May 18 & 19, 2025

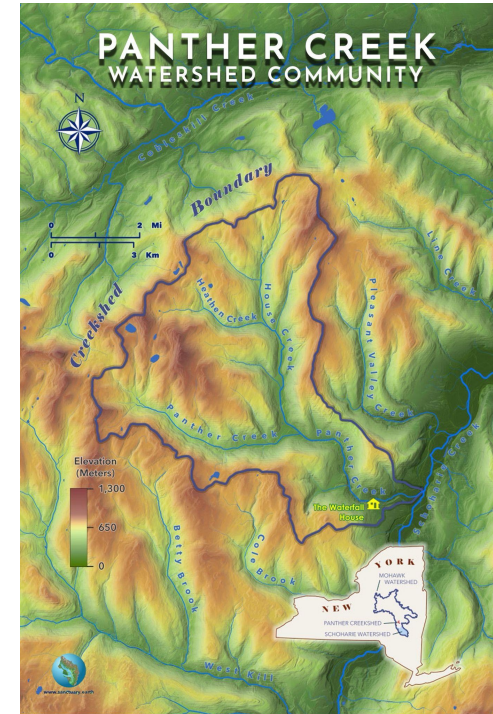
Welcome to the Panther Creek-shed!

Panther Creek flows through a mosaic of forests, farms, hill towns and hamlets before it joins the Schoharie River. But a creek is more than water that flows. It's a thread that weaves together land, water, and people. The Panther Creek-shed isn't just a place on the map—it's a living, breathing system, shaped by those who inhabit it and care for it.

Today we invite you to explore this creek-shed as a shared landscape. Where actions on the land ripple through the entire system. From hill tops, to woodlots, through back road culverts, flowing through farms and yards; past our homes and through our town; every part of this place matters. Restoration starts by listening to the land, working across fence lines, and reconnecting with natural patterns and each other.

Land-Based, Community-Driven Action

- Local landowners, farmers, and forest users are essential to long-term restoration.
- Opportunities for involvement include:
 - Forest stewardship and invasive species control
 - Agroforestry, regenerative farming, and soil-building
 - Trail maintenance and access management
- building a **place-based shared vision** rooted in community participation, love and care.



Erosion at Public Access Points

Concerns about erosion, landslides and sediment runoff at popular public access points, Especially here at the waterfall.

- Balance access, safety, and streambank integrity. Prevent further gully formation

2025 - Actions needed here at the Falls:

- Redesign and install a better access trail.
- Upstream stormwater retention and management.
- Plant living buffers to hold the bank



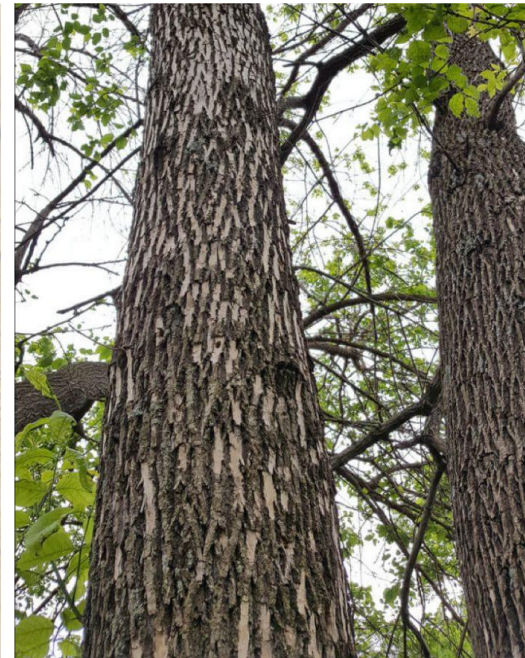






Forest Health Concerns

- **Emerald Ash Borer (EAB)** is rapidly killing ash trees across the Panther Creek-shed.
- Tree mortality causes increased flood risk and erosion, ecological change and exacerbates invasive species encroachment.
- Other forest threats include Hemlock Woolly Adelgid (HWA), Climate stressors and increased wildfire risk.
- A coordinated response will involve:
 - Strategic removals by private landowners, local DOTs and National Grid
 - Monitoring forest health and public safety risk assessments
 - Integrating forest planning/management into broader watershed goals





THE WATERFALL CENTER

FOR BIOREGIONAL LEARNING

www.waterfallcenter.org
info@waterfallcenter.org